



# CRANE TYRE CR-01

**445/95 R 25 174FTL**

*Purpose built Crane Tyre with 26mm thread depth. The deepest thread pattern in comparison to competitors.*

*Factory OEM fitted on new Liebherr All-Terrain Cranes.*

*STGO Certified axle load of up to 16,500kg at 58km/ph - AN INDUSTRY FIRST.*

- ▶ The non-directional tread design improves **operator comfort** by reducing road noise and delivering precise handling response
- ▶ Open tread block design offers **excellent traction** and **self cleaning properties in Off-Road application.**
- ▶ Improved rolling resistance due to all-steel construction **reduces fuel consumption.**

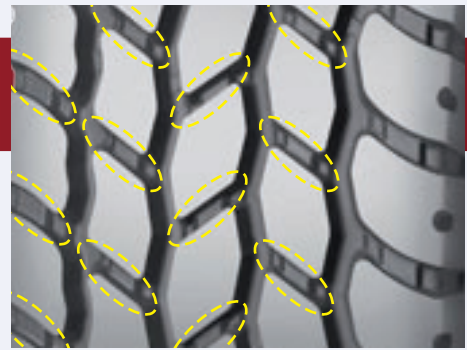
**RIVERTEK SERVICES LTD.**

**Mitas**

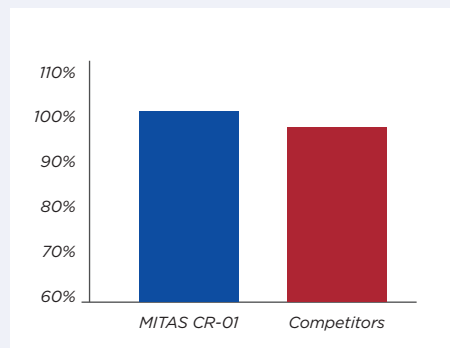
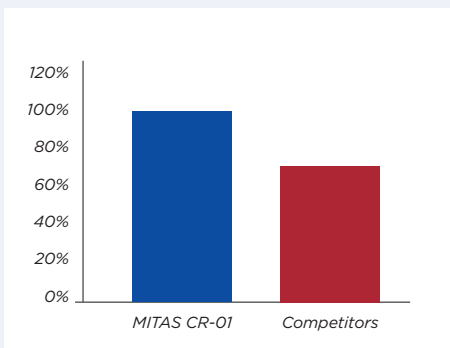
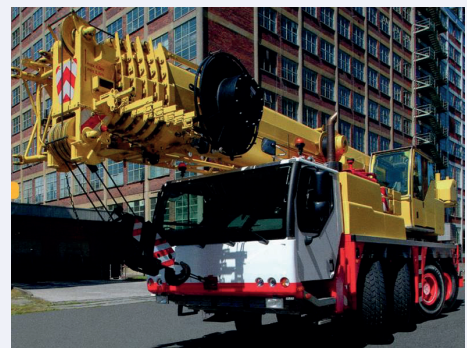
**A PREMIUM TYRE AT A REASONABLE PRICE**

# Crane radial tyres benefits:

- ▶ **Increased tyre life** due to “bridges” between the tread blocks restricting tread movement or “shuffle”.
- ▶ **Reduction of noise emission and minimal “saw-tooth” wear.**
- ▶ Tyre is **fully homologated** according to EU Directives 92/93,2001/43 and 2005/11 (noise homologation).
- ▶ **The deepest tread pattern depth (26mm)** in comparison to competitors offering excellent tyre life and traction.
- ▶ Tread is **regroovable** offering extended tyre life and reducing costs.
- ▶ **Eco-tyre** contributing to a **healthier environment**: produced without aromatic oils in conformity with EU legislation.



**Bridges**



Tyre Size	Tread Pattern	LI/SS	Type	Rim (Permitted)	Tyre Dimensions (mm)					Load Capacity (Kg)	Inflation (kPa)	
					New OD	SW	Max. in Service		SR			
					OD	SW	OD	OW	SR			
25"	445/95R25	CR-01	174F	TL	11.00/1.7CR-25 (11.25/2.0-25)	1 483	440	1 570	483	688	6 700	900

## Variation in load capacity with inflation

Tyre Size	LI/SS	Tyre Dimensions (mm)											Inflation (kPa)	
		SPEED (km/h)												
		0	5	10	20	30	40	50	65	70	80	85		
25"	445/95R25 CR-01	174F	10 395	8 780	7 575	6 360	5 320	4 900	4 775	4 585	4 475	4 260	4 135	500
			12 125	10 255	8 855	7 430	6 215	5 720	5 570	5 350	5 220	4 970	4 820	600
			13 590	11 465	9 880	8 280	6 915	6 365	6 195	5 950	5 805	5 525	5 360	700
			15 160	12 795	11 035	9 255	7 740	7 125	6 940	6 665	6 510	6 195	6 010	800
			16 750	10 070	12 060	10 750	8 375	7 705	7 505	7 205	7 035	6 700	6 500	900

LI/SS: Load Index/ Speed Symbol | OD: Overall Diameter | SW: Section Width | OW: Maximum Overall Width | SR: Static Radius

**RIVERTEK SERVICES LTD. COLOWEN, BLARNEY, CO. CORK, IRELAND**

**TEL: +353 (0)21 4385342 / 4381314 - FAX: +353 (0)21 4381504**  
**EMAIL: info@rivertekservices.com - www.rivertekservices.com**